


SPB 1.7-2.5

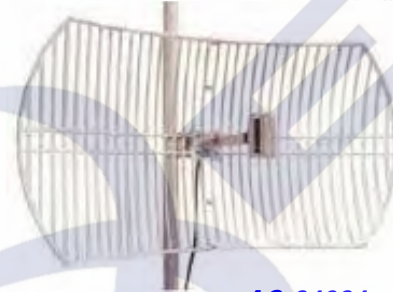
SLP 1.7-2.5

SDC 2.4-15

SCO 2.4-6

SCO 2.4-9

SERIE SMS

AY-24018

AG-24024

ASP-1002N

ASP-1002SMA-F

ASP-1003N

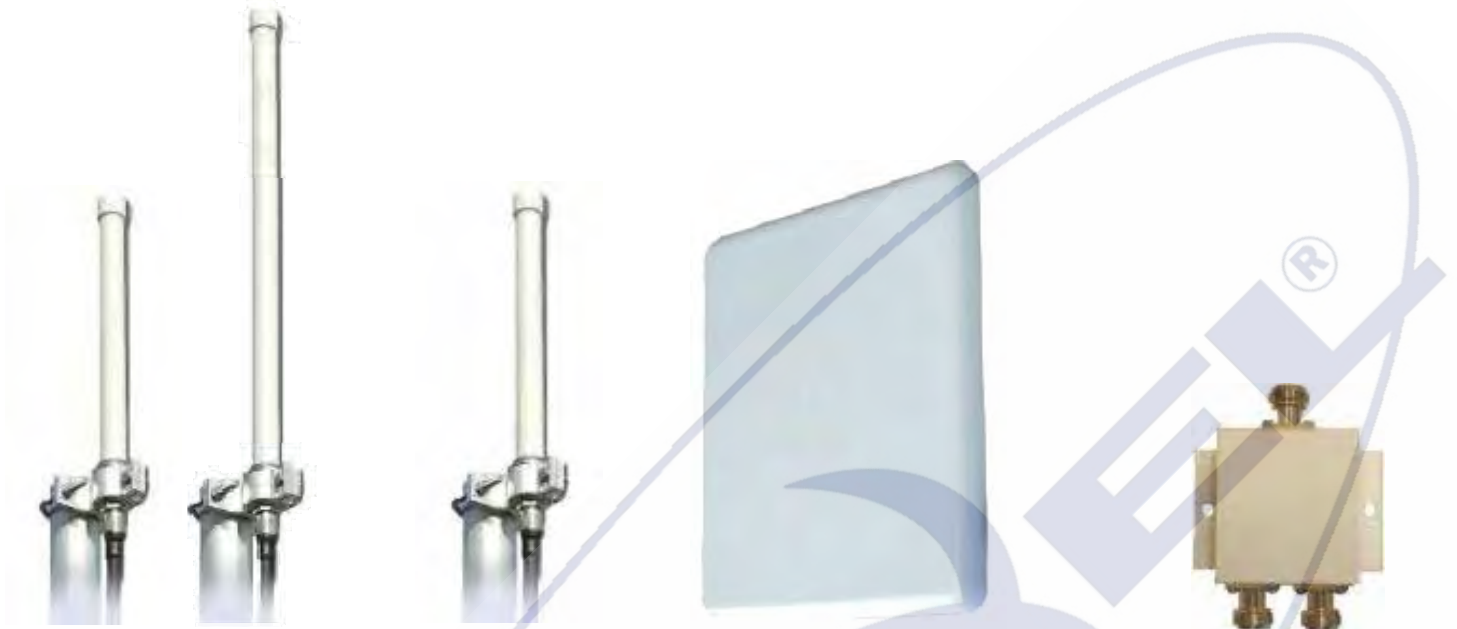
INGLASS W-LAN

MINI-2.4

PA 2.4

Codice	Descrizione	Caratteristiche	Note
2130220.00	Sirio SCO-2,4-6 OMNIDIR. COLLINEARE - Gain 6dBi	2300-2500 MHz	
23311520.83	Sirio SCO-2,4-6 OMNI-COLL MARINER "M-8" NY - Gain 6dBi	2300-2500 MHz	
2130320.00	Sirio SCO-2,4-9 OMNIDIR. COLLINEARE - Gain 9dBi	2300-2500 MHz	
2130403.00	Sirio SMS 2,4X2-8 OMNI-SECTOR 2X180° - Gain 7,4dBi	2400-2500 MHz	
2130603.00	Sirio SMS 2,4X3-9 OMNI-SECTOR 3X120° - Gain 9,3dBi	2400-2500 MHz	
2130803.00	Sirio SMS 2,4X4-11 OMNI-SECTOR 4X90° - Gain 11dBi	2400-2500 MHz	
2131103.00	Sirio SMS 2,4X6-12 OMNI-SECTOR 6X60° - Gain 12dBi	2400-2500 MHz	
2110103.00	Sirio SPB-1,7-2,5-10 30CM/SMA- DIR. PLANAR - Gain 10dBi	1700-2500 MHz	
2111203.00	Sirio SDC 2.4-15 DIRETT. CAVITY - Gain 15dBi	2400-2500 MHz	
2130103.00	Sirio SLP 1,7-2,5-11 DIRETT. LOG-PERIODIC - Gain 11dBi	1700-2500 MHz	
AG-24024	Proxel "GRID" 24dB Griglia in fusione 1000x600 N-F - Gain 24dBi	2400-2500 MHz	NEW
AY-24018	Proxel "YAGI" 18dB Radomizzata a Tubo 880x66 N-F - Gain 18dB	2400-2500 MHz	NEW
MINI-2,4	Proxel OMNIDIR. 2,4GHz con staffa da tavolo/muro - Gain 6dBi	2400-2500 MHz	NEW
2216802.93	Sirio INGLASS W-LAN 2,4Ghz 3M/ SMA-M - Gain 2,1dBi	2300-2500 MHz	
2450002.21RP	Sirio PA 2.4-2 TNC-M RP abbattibile per ACCESS POINT - Gain 2,	2400-2500 MHz	
2450102.15RP	Sirio PA 2.4-2 SMA-M RP abbattibile per ACCESS POINT - Gain 2	2400-2500 MHz	
ASP-1002N	Proxel Splitter 2 Uscite Connettore N	800-2500 MHz	
ASP-1002SMAF	Proxel Splitter 2 Uscite Connettore SMA-F	800-2500 MHz	
ASP-1003N	Proxel Splitter 3 Uscite Connettore N	800-2500 MHz	

ANTENNE 3,3 - 5,1/5,8 GHZ WIRELESS-LAN SIRIO



SCO 3.3-7

SCO 3.3-10

SCO 5.47-10

AP-515823

ASP-5002N

2132520.00	Sirio SCO 3.3-7 dBi Omnidirezionale Collineare	3300-3800 MHz	NEW S.R.
2132620.00	Sirio SCO 3.3-10 dBi Omnidirezionale Collineare	3300-3800 MHz	NEW S.R.
2132020.00	Sirio SCO-5,47-10 Omnidirezionale Collineare	5470-5875 MHz	NEW
AP-515823	Proxel Antenna a Pannello 23 Db Connettore N Dim 30,5x30,5x25c	5150-5875 MHz	NEW
ASP-5002N	Proxel Splitter 2 Uscite Connettore N		